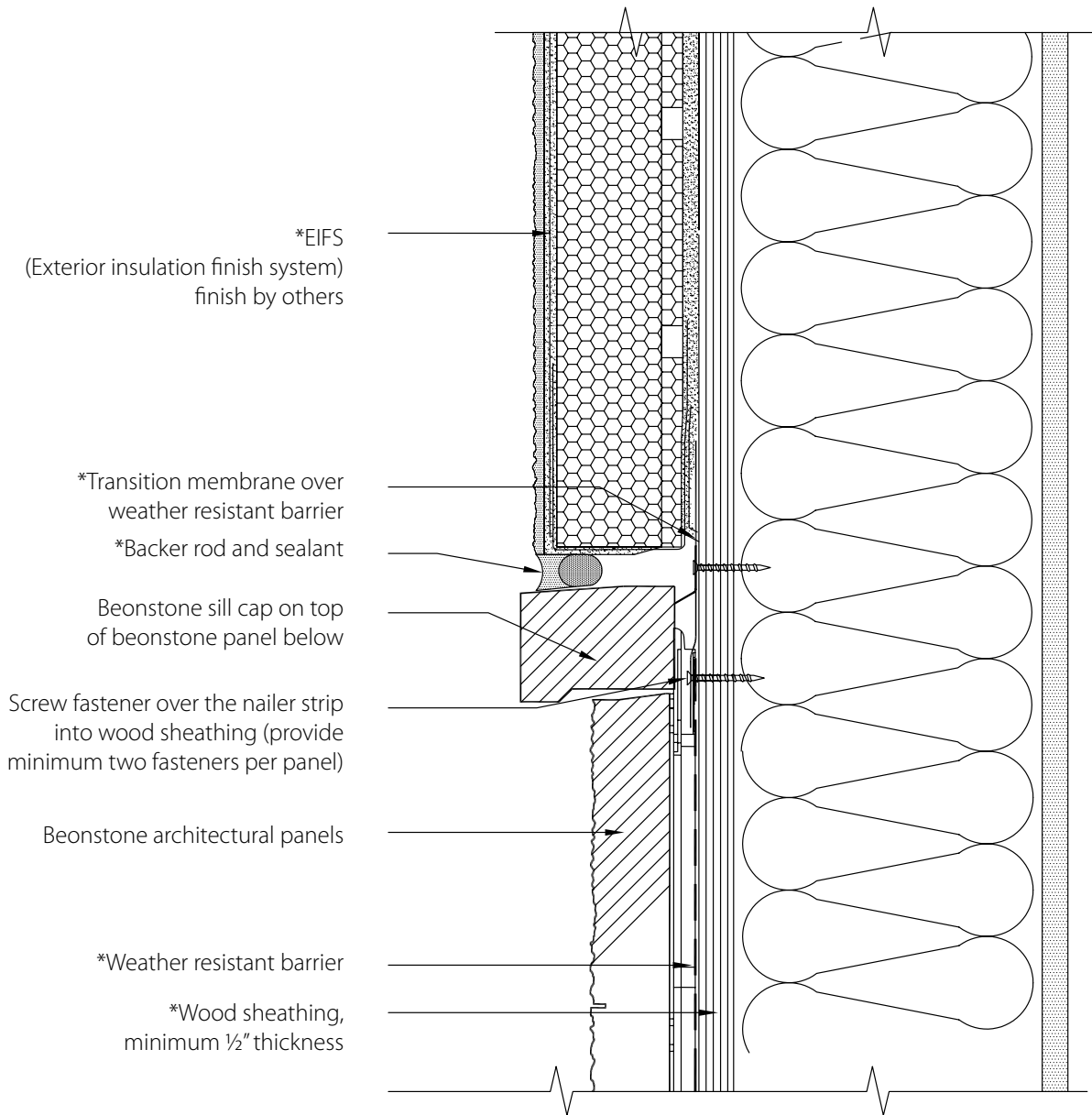


Note: screw fasteners are to be minimum #10 x 1", corrosion resistant type unless otherwise noted.



DISCLAIMER : BEONSTONE HAS PRODUCED THIS DETAIL AS AN ARCHITECTURAL GUIDE FOR THE SELECTION OF BEONSTONE PRODUCTS AND SYSTEMS. IT MUST BE MODIFIED AND ADAPTED FOR USE IN SPECIFIC PROJECTS IN PARTICULAR WHERE GOVERNING CODES AND STANDARDS MAY HAVE ADDITIONAL REQUIREMENTS. BEONSTONE IS NOT LIABLE FOR DESIGN AND WORKMANSHIP ASSOCIATED WITH THE USE OF THIS DETAIL. PLEASE REFER TO BEONSTONE.COM FOR LATEST REVISIONS.

WOOD STUDS WITH WOOD SHEATHING (FOR LOW RISE RESIDENTIAL CONSTRUCTION)

SECTION DETAIL – HORIZONTAL TRANSITION WITH SILL CAP

be on
stone

by Permacon